



# **Permanent Supportive Housing (PSH) for Adults with Serious Mental Illness: Participant Characteristics & Early Outcomes**

*Housing Solutions for Virginia's Vulnerable Citizens*

June 5, 2017

**Kristin Yavorsky, MSW**

Homeless Projects Coordinator  
Office of Behavioral Health

**Kaitlyn Wark, MA**

Homeless Projects Evaluator  
Office of Behavioral Health

# Acknowledgement and Disclaimer

Funding for this event was made possible in part by Collaborative Agreement TI026051 from SAMHSA. The views expressed in written conference materials or publications and by speakers and moderators do not necessarily reflect the official policies of the Department of Health and Human Services; nor does mention of trade names, commercial practices, or organizations imply endorsement by the U.S. Government.

# Virginia Has Limited PSH Capacity

Until recent General Assembly allocations to DBHDS, PSH for individuals with behavioral health disorders was developed primarily through the **homeless services system** or in **one-off projects by mission-driven organizations**.

## 1. PSH For Homeless Households

**HUD 2016 Housing Inventory Count for Virginia:**

**4,314** PSH Beds (1,657 Family Beds; 2,657 Single Adult Beds)

**1,924** (45%) for Veterans

## 2. Supported Housing for Mental Health Consumers

**DBHDS 2015 Mental Health Block Grant Report:**

CSBs reported **496** adults with mental illness served in supported housing

# What Virginia's transformed system can look like



Decreased

Psych & Medical Hospitalizations

ED Visits

Incarcerations

**Homelessness**

Premature mortality/Suicides



Increased

**Individuals w/ SMI in Stable Housing**

Primary Care Visits

Person Centered Care  
(improve engagement)

Trauma Informed Care  
(improve engagement)

Cultural competence  
(improve engagement)

Improved Data Collection



Special focus on Veterans, SMI, SED, SUD

Consistent Service Array

Increased Numbers Served

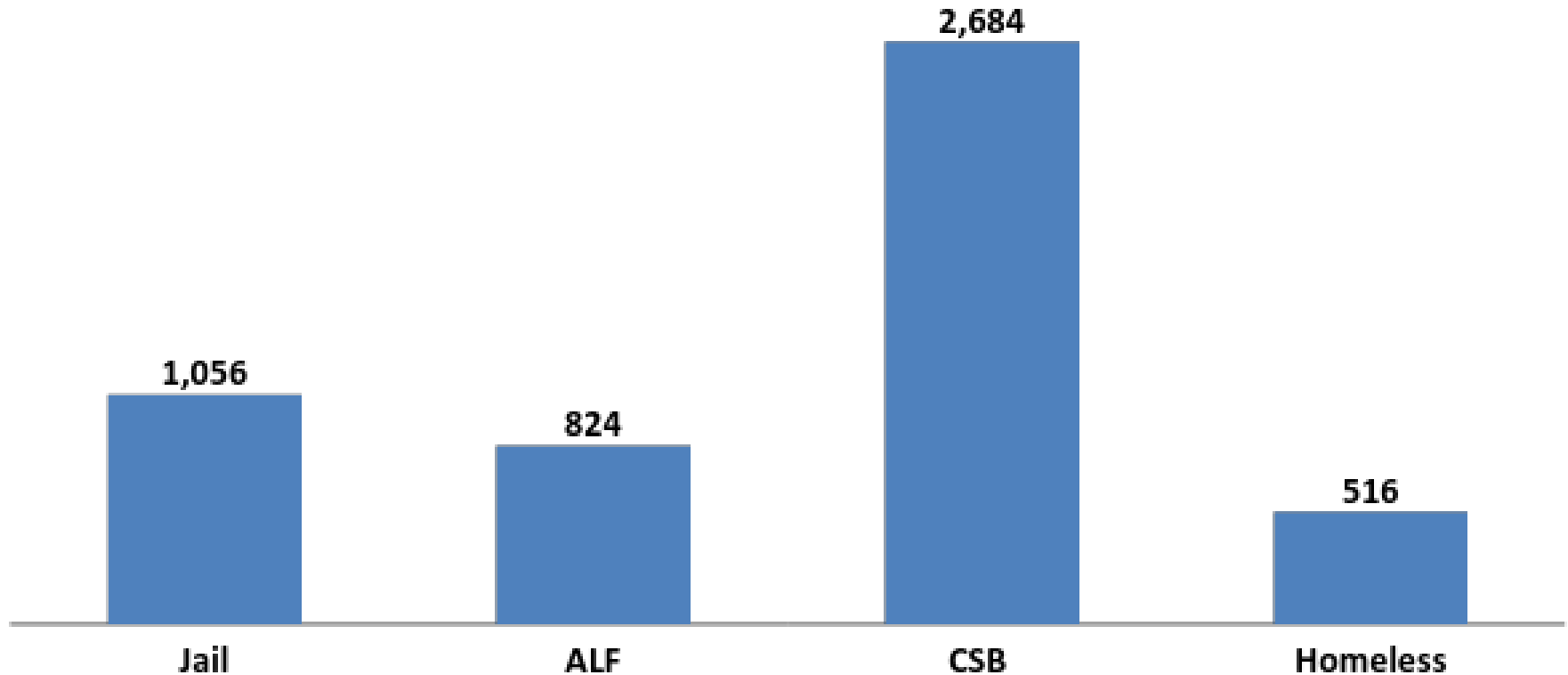
Better BH Outcomes

Lower Cost/ Higher Quality

Common Metrics

Pay for Performance

# PSH Units Needed in Virginia by SMI Sub-Population

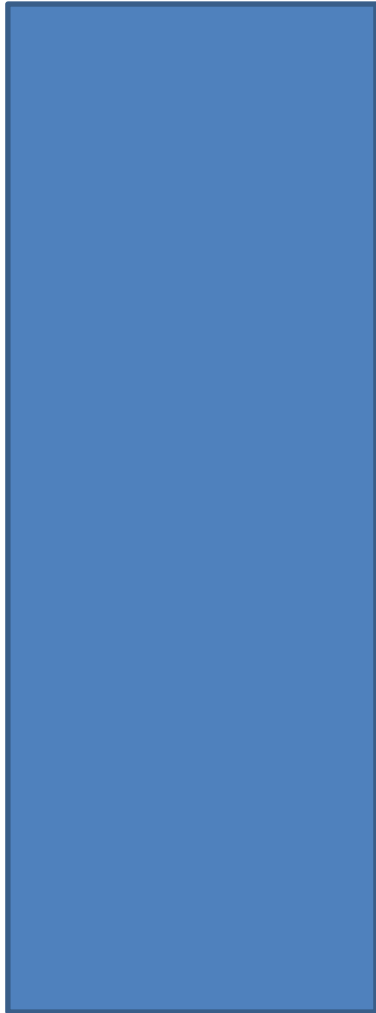


## Data Sources

Jail: Mental Illness in Jails Report (Virginia Compensation Board, 2015)  
ALF: Auxiliary Grant payments to localities (Virginia DARS, 2016)  
CSB: CSB CCS\_3 data submissions (DBHDS, 2016)  
Homeless: The State of Permanent Supportive Housing in Virginia, 2015 (Virginia Housing Alliance)

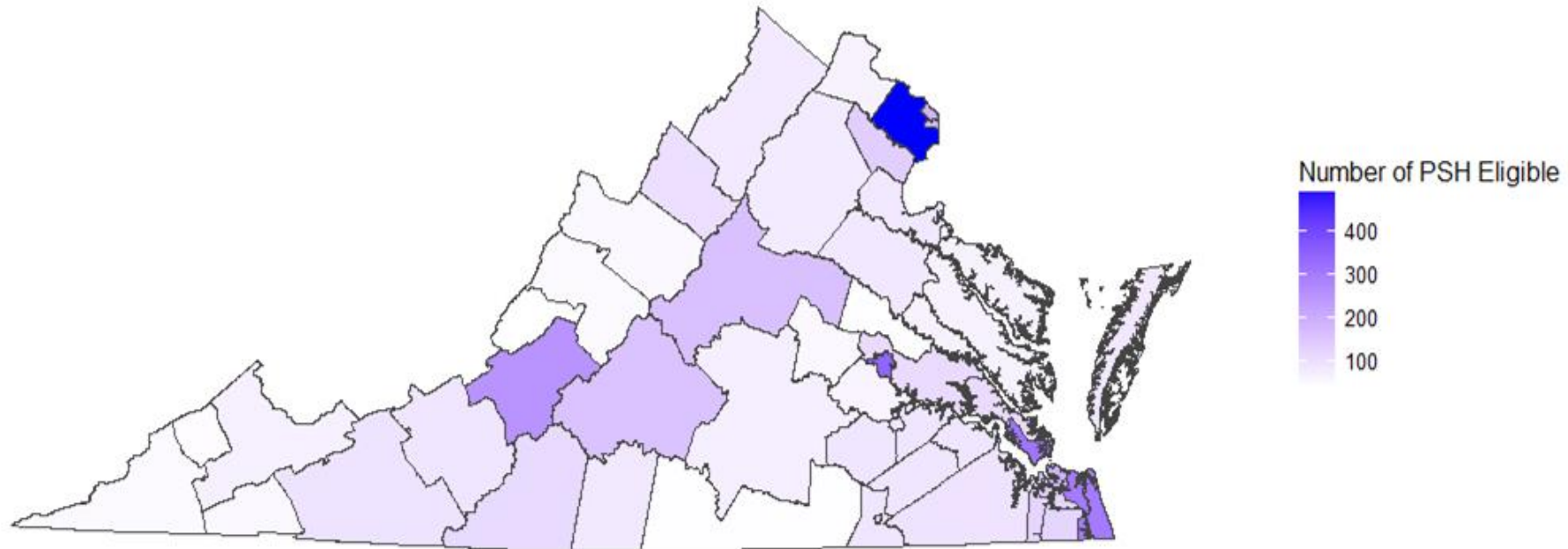
# Unstably Housed CSB Consumers

2,684



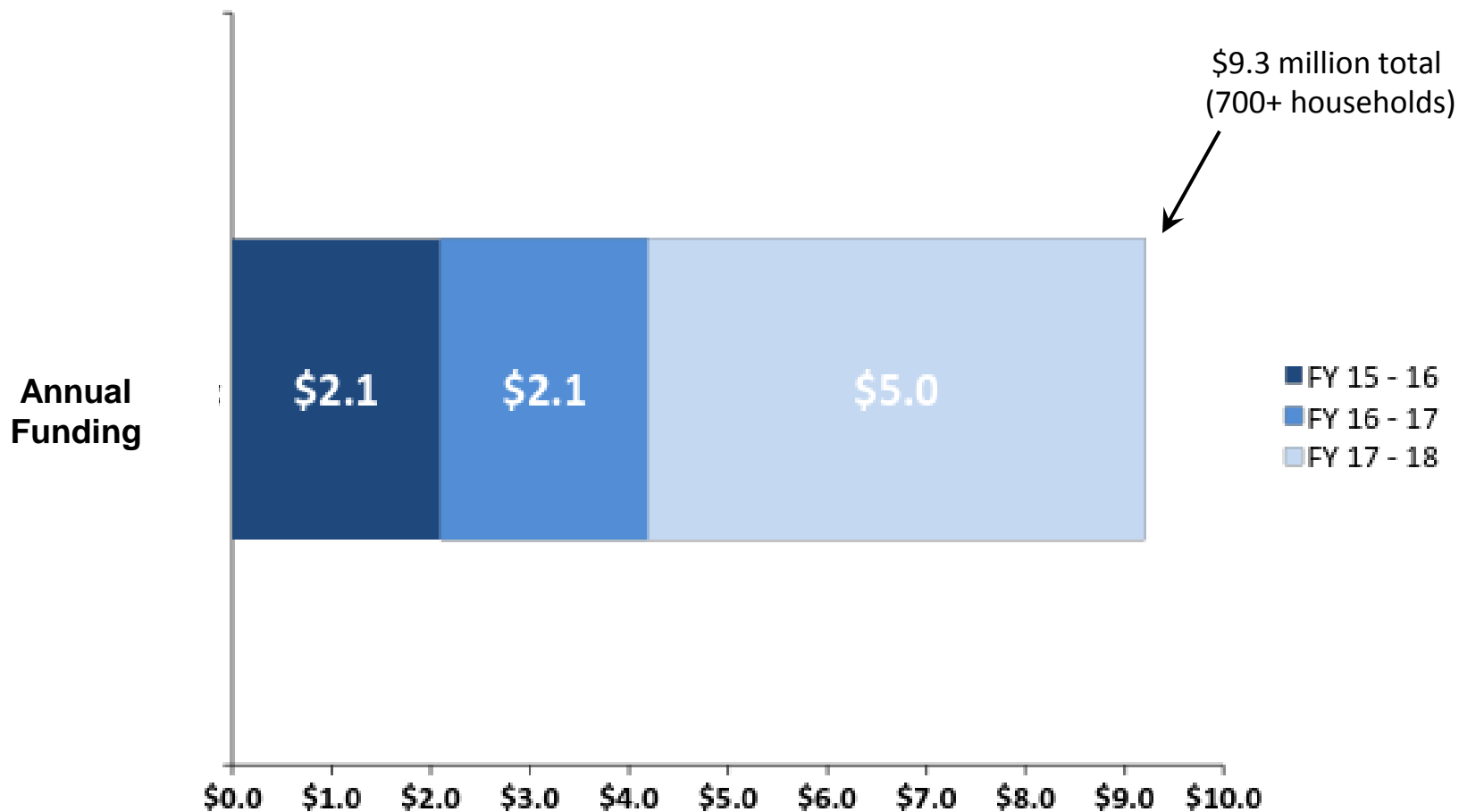
- Top 20% utilizers of CSB Crisis Stabilization, Emergency Services, or State Funded Inpatient Psychiatric Care (LIPOS) in FY16
- Multiple moves in a quarter or residence type that indicates housing instability (e.g., boarding home)
- 464 (17%) had a state psychiatric facility stay in FY16:
  - The typical individual had multiple admissions
  - Average LOS 56 Days
  - At least 32 were on the Extraordinary Barriers List (EBL)
- Individuals with a state hospital stay in FY16 were at least 2.5 times as likely to have a CSB-documented episode of homelessness than were CSB consumers overall.

# 5,080 PSH Unit Need by CSB Catchment Area



# DBHDS Annual PSH Funding by Fiscal Year

(in millions)





# Adheres to Evidence-Based Practice Standards

- Functional separation of housing and services
- Decent, safe, and affordable housing
  - Individuals pay 30% of income to rent
- Community integration and rights of tenancy
- Access to housing and privacy

# DBHDS PSH Target Population

Adults with serious mental illness, as defined by DBHDS, who are currently:

1. Patients in state psychiatric facilities who are interested and eligible for PSH, or
2. Residents of supervised residential settings (e.g., ALFs, group homes) who can live more independently, or
3. Chronically homeless, or literally homeless and at-risk of becoming chronically homeless, or
4. Unstably housed and frequent users of hospital or criminal justice system interventions

# DBHDS PSH Funding Structure

Eligible providers: CSBs or Non-profit supportive housing providers

**Rental assistance** **85%**

**Housing operations** **15%**

- Rental subsidy administration
- Client assistance
- Housing stabilization services

# Cohort 1

(2015 \$2.1 million GA allocation; Contract Start Dates January – March 2016)

<b>Funded Agency - Project</b>	<b>CSB Catchment</b>	<b>Units Funded</b>
Norfolk CSB – <i>Road2Home Project</i>	Norfolk, Chesapeake, Suffolk, Isle of Wright, Southampton Counties	34
Hampton – Newport News CSB <i>Road2Home Project</i>	Hampton, Newport News	34
Hampton & Norfolk CSBs – <i>Keys Project</i>	DBHDS Region 5	16
Arlington CSB	Arlington	30
Pathway Homes	Fairfax-Falls Church, Prince William, Alexandria	35
<b>Total PSH Units</b>		<b>149</b>

# Cohort 2

(2016 \$2.1 million GA allocation; Contract Start Dates Fall 2016)

Funded Agency - Project	CSB Catchment	Units Funded
Richmond Behavioral Health Authority <i>HomeConnect</i>	Richmond City	52
Virginia Beach DHS	Virginia Beach	52
Fairfax-Falls Church CSB <i>SUSTAIN</i>	Fairfax-Falls Church	33
Total PSH Units		<b>137</b>

# Estimated Funding Allocation by Region

Region	Current DBHDS PSH Units	Anticipated New PSH Units	Total PSH Units	Est. Percentage of Total Funding
Northwest	0	70	70	9%
Northern	98	50	148	31%
Southwest	0	104	104	7%
Central	52	92	134	18%
Tidewater	136	132	260	36%
<b>Total Units</b>	<b>286</b>	<b>430</b>	<b>716</b>	

A Year Before PSH Enrollment

# **OUR CLIENTS**

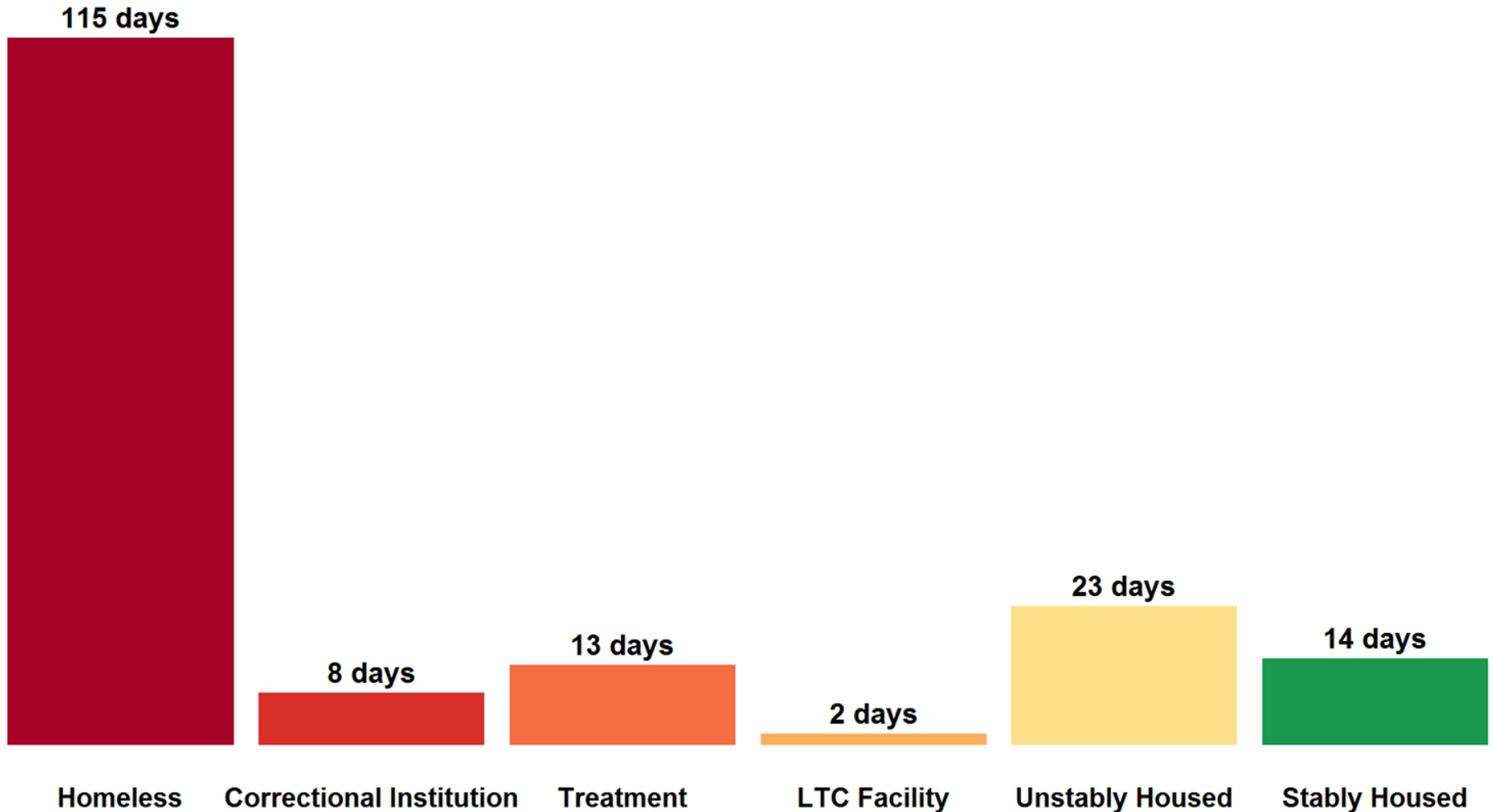
# Number by site

**214 served to date**

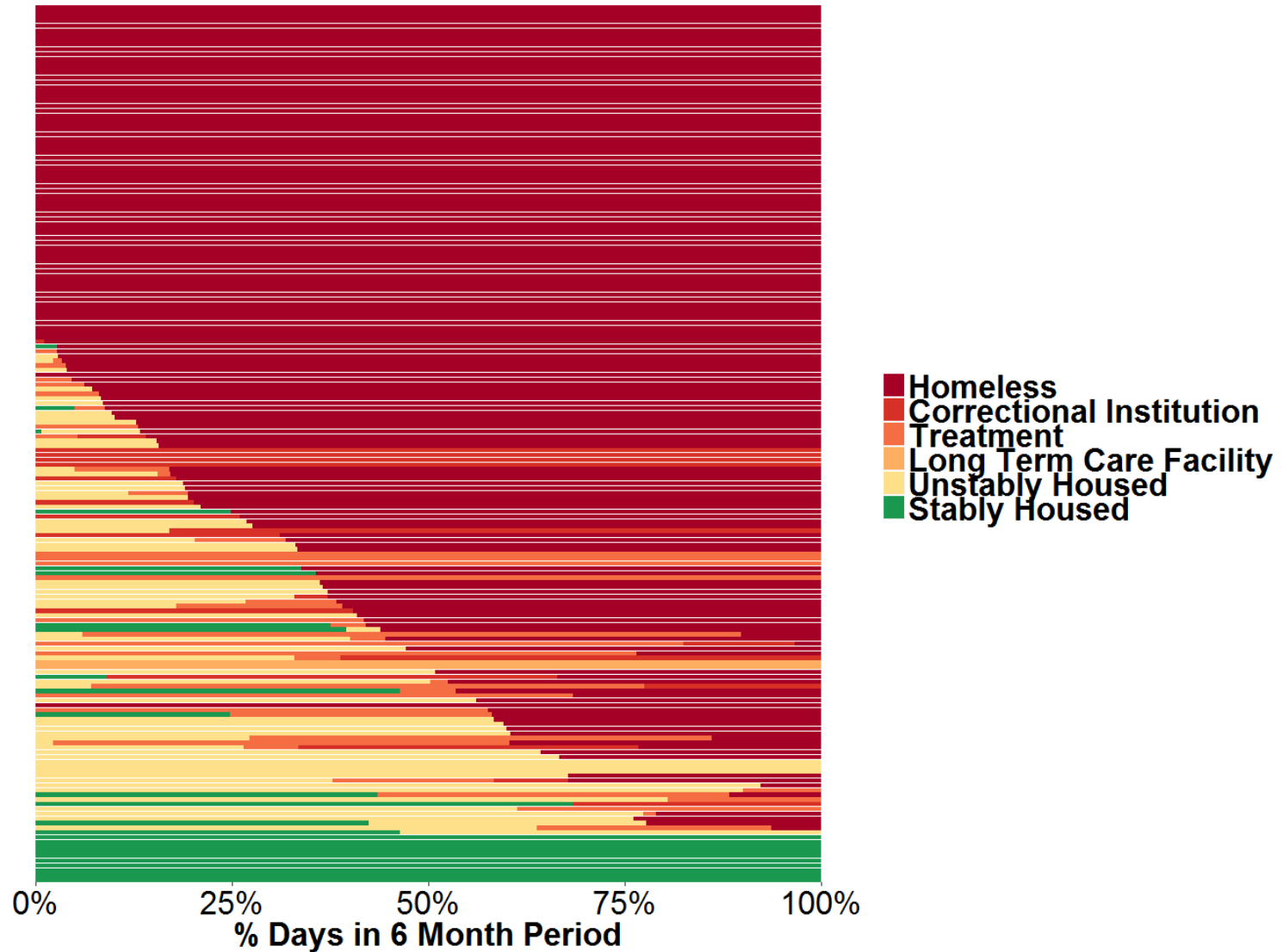
Site	Number served to date
Arlington	21
Sustain (Fairfax)	7
Pathways (Fairfax, Prince William, Alexandria)	37
Richmond Behavioral Health Authority	29
Virginia Beach	8
Hampton - Newport News	54
Norfolk	48
Keys	10



# Average Length of Stay in 6-months Before Housing



# Many Clients Spent Entire 6-months Literally Homeless before PSH



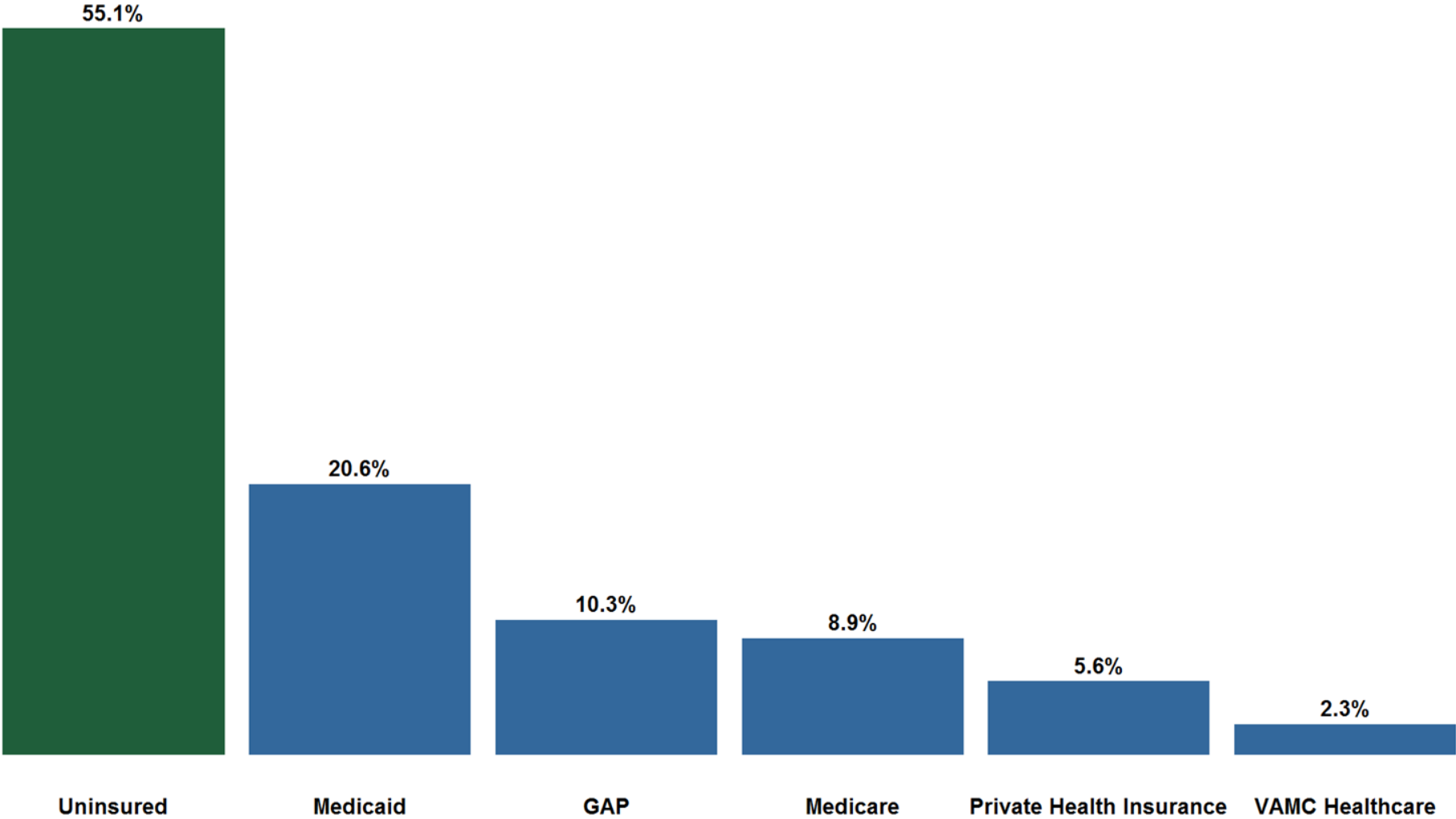
# State Hospital Experience

- **One in three** experienced a state hospital stay in their lifetime
- **15%** experienced a state hospital stay within the year before their PSH enrollment
  - Average length of stay was **111 days**.

# Local Hospital Experience

- **57%** had an inpatient stay between 2014 and 2016
- Totaling...
  - **509 admissions**
  - **330 admissions from ED**
  - **3,402 inpatient bed days.**

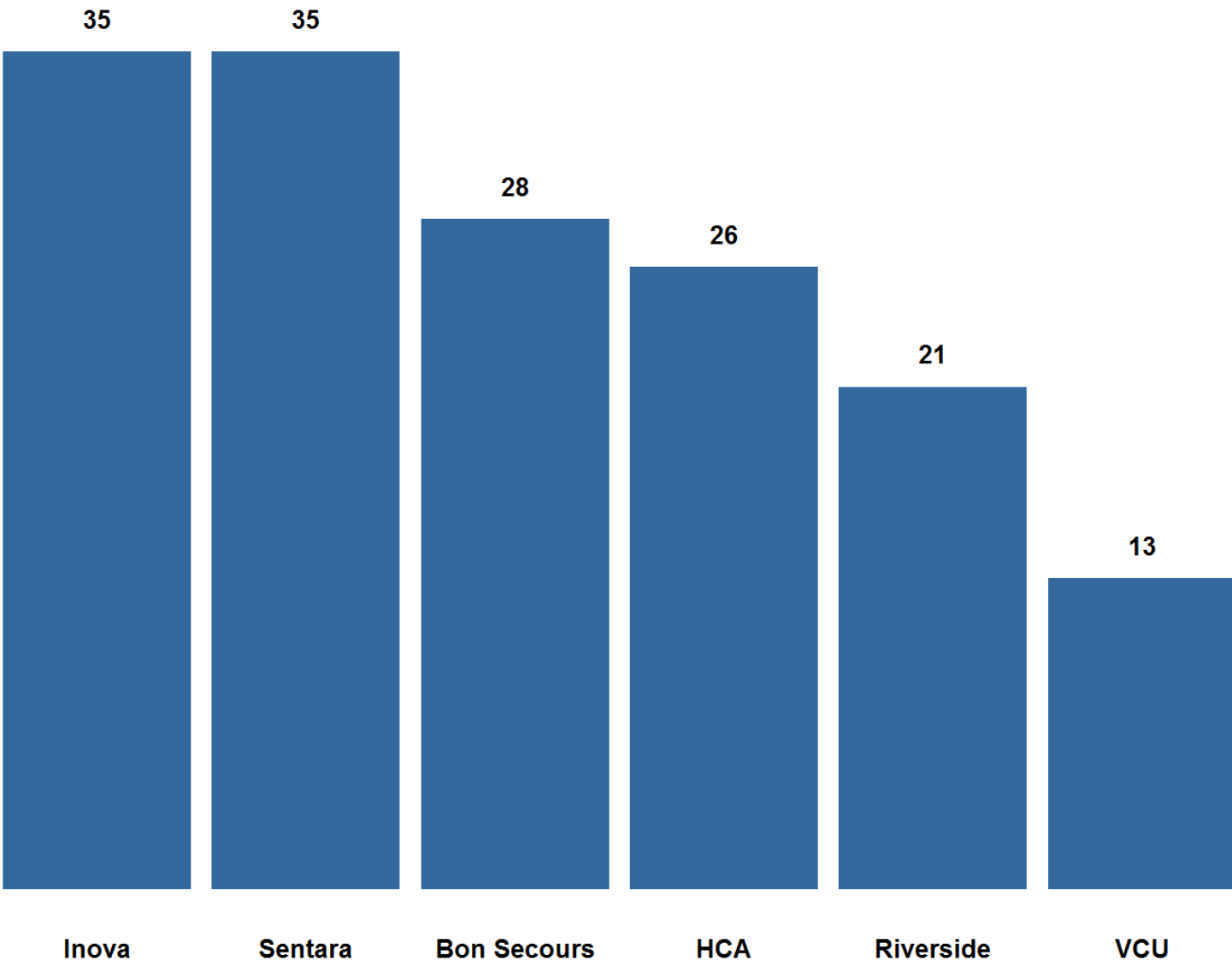
# Majority of Clients Uninsured at PSH Intake



# Private Hospital Experience

- **37%** (n=80) had an inpatient stay in year before housing, resulting in **191** admissions and **1,230** bed days.
  - **132** admissions were from the ED
  - Average length of stay was **15.4 days**
  - **34%** were readmitted within 30 days of discharge

# Number of Admissions by Hospital System



Impact of 6-months of Permanent Supportive Housing

# **OUTCOMES**

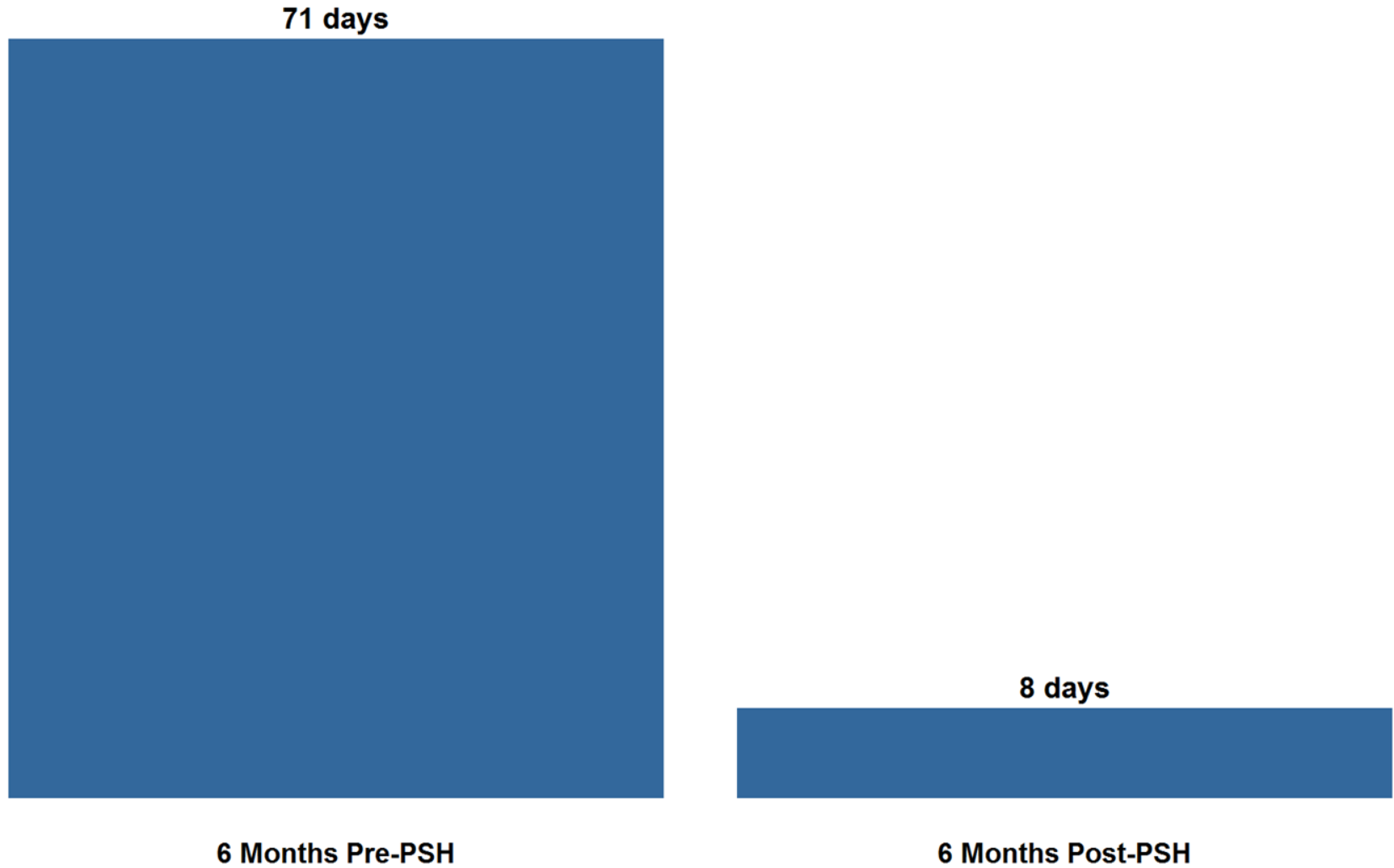


# Housing stability

94%

stably housed

# State Psych Hospitalizations



# Private Hospitalizations

