

csch.org



We Are

Advancing housing solutions that:



**Improve
Lives**



**Maximize
Resources**



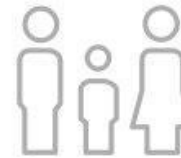
**Build
Communities**

Improving Lives

\$600 Million in Loans & Grants



200,000 Homes for
160,000 individuals
40,000 families



1200 Loans
3000 Grants

\$40 Billion in Economic Impact



Reaching 300 communities in orange states



Lowered costs &
improved health
outcomes for
fragile individuals &
families



120,000
jobs created

Improving Many Lives

- **Coordinated Entry Strategies** – *Helping to implement in dozens of communities nationwide to ensure better use of resources and better results*
- **Chronic Homelessness** – *Reduced by 27% in seven years*
- **Veterans Homelessness** – *Reduced by 47% in seven years*
- **Family Homelessness** – *Reduced by 23% in seven years; CSH Keeping Families Together Supportive Housing model active in nine communities across country*

Building Communities



47 Orange States =
Where CSH is active in USA



We Drive Impact



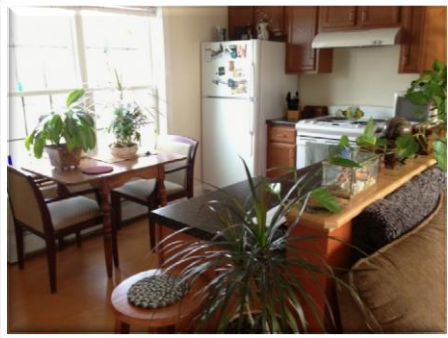
The Basics

Supportive housing = affordable home + services that change lives.



High Quality Supportive Housing

Common factors include:



Located in safe neighborhoods with close proximity to:

- **Transportation**
- **Services and employment opportunities**
- **Shopping, recreation and socialization**



Tenants have a lease identical to those who are not in supportive housing

Services are voluntary and person-driven. They focus on ensuring tenants thrive in stable housing, regardless of barriers they face



The housing and its tenants are good neighbors, contributing to community needs and goals whenever possible



The Solution

- **More than 80% of supportive housing tenants are able to maintain housing**
- **Supportive housing tenants choose to participate in services even when they are not required to do so**
- **Use of the most costly (and restrictive) services in homeless, health care and criminal justice programs declines, saving taxpayer \$\$**

For more information:

Larry Oaks

larry.oaks@csh.org

860-560-0744

